

# RCR Crystallaria Italiana

RCR Crystallaria Italiana originates from 1960s Tuscany, designing their entire collection using recycled Luxton Eco Crystal Glass, producing an ultra-clear, modern crystalware.

# RCR Crystallaria Drinkware



RECYCLED MATERIALS



DISHWASHER SAFE



RECYCLABLE PRODUCT



RCR Crystallaria Alkemist goblet & tumbler

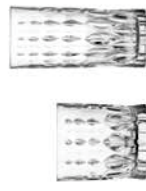
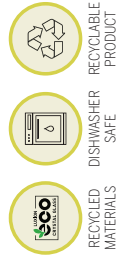
Alkemist	DOF	Tipping Tumbler	Apertif Goblet	Cocktail Goblet	Gin & Tonic
Item Code	RCR363-657	RCR363-663	RCR363-650	RCR363-655	RCR363-649
Max Ø	85mm	87mm	103mm	104mm	85mm
Height	108mm	95mm	227mm	237mm	210mm
Capacity	364ml	380ml	532ml	667ml	580ml

Alkemist	Spirits Goblet	Bottle
Item Code	RCR363-651	RCR363-652
Max Ø	100mm	111mm
Height	128mm	214mm
Capacity	530ml	1.0L

Aria	Coupe
Item Code	RCR363-000
Max Ø	115mm
Height	170mm
Capacity	330ml

Extra	DOF	White Wine	Wine	Champagne Flute
Item Code	RCR363-901	RCR363-903	RCR363-902	RCR363-904
Max Ø	80mm	79mm	85mm	75mm
Height	95mm	185mm	195mm	225mm
Capacity	330ml	200ml	276ml	187ml

# RCR Cristeria Drinkware



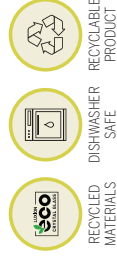
Marilyn	DOF	Highball
Item Code	RCR363-933	RCR363-934
Max Ø	82mm	70mm
Height	94mm	150mm
Capacity	340ml	350ml



Melodia	Tumbler	DOF	Highball
Item Code	RCR363-171	RCR363-176	RCR363-180
Max Ø	74mm	80mm	70mm
Height	84mm	95mm	150mm
Capacity	240ml	340ml	360ml



# RCR Cristeria Drinkware



Marilyn	DOF	Highball
Item Code	RCR363-933	RCR363-934
Max Ø	82mm	70mm
Height	94mm	150mm
Capacity	340ml	350ml



Opera	Old Fashioned	DOF	Highball	White Wine	Red Wine	Champagne Flute
Item Code	RCR363-535	RCR363-505	RCR363-500	RCR363-555	RCR363-557	RCR363-551
Max Ø	74mm	82mm	70mm	70mm	76mm	70mm
Height	85mm	94mm	150mm	177mm	194mm	210mm
Capacity	210ml	300ml	350ml	160ml	230ml	130ml

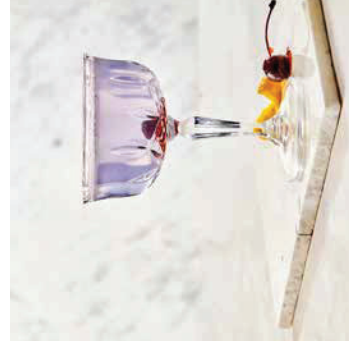


Melodia	White Wine	Red Wine	Champagne Flute	Carafe
Item Code	RCR363-155	RCR363-160	RCR363-150	RCR363-185
Max Ø	82mm	87mm	70mm	90mm
Height	190mm	202mm	222mm	270mm
Capacity	210ml	270ml	160ml	1.2L

Opera	Champagne Coupe	Liqueur / Shot
Item Code	RCR363-550	RCR363-536
Max Ø	100mm	48mm
Height	140mm	63mm
Capacity	240ml	60ml



Miscellaneous	Brilliant Whisky Decanter	Eco Water Bottle	Essential Tumbler
Item Code	RCR363-677	RCR363-805	RCR363-201
Max Ø	92mm	90mm	85mm
Height	189mm	272mm	95mm
Capacity	850ml	1.09L	420ml



## Coupe Capabilities

A classic champagne coupe always doubles as a first choice cocktail glass - and at a clever, multi-use capacity of 240ml, the RCR Opera coupe impresses no matter what's inside.



Stack	DOF	Highball	Click, Click Bowl
Item Code	RCR363-854	RCR363-855	RCR363-858
Max Ø	90mm	80mm	87x80mm
Height	95mm	141mm	51mm
Capacity	320ml	390ml	350ml



Timeless	Old Fashioned	DCF	Highball	White Wine	Red Wine
Item Code	RCR363-235	RCR363-240	RCR363-245	RCR363-225	RCR363-230
Max Ø	83mm	86mm	76mm	81mm	89mm
Height	86mm	92mm	150mm	200mm	209mm
Capacity	313ml	360ml	443ml	227ml	300ml

Timeless	Champagne Flute	Shot	Combo Mixing Glass
Item Code	RCR363-220	RCR363-234	RCR363-301
Max Ø	70mm	52mm	97mm
Height	238mm	60mm	160mm
Capacity	210ml	60ml	650ml

Universum	Tumbler	Wine Glass
Item Code	RCR363-405	RCR363-400
Max Ø	89mm	96mm
Height	99mm	220mm
Capacity	425ml	550ml

## Expert Tips Drinkware Care & Maintenance

Correct storage and stacking, washing, drink preparation, and serving can minimise glass breakage:

Top 3 reasons why glass breaks:

- Stacking glasses** which are not designed to be stacked
- Thermal shock** when ice is added to a glass that has not reached room temperature after washing
- Mechanical shock** caused by minute abrasions from contact with foreign objects such as cutlery and muddlers



### Washing

- Rinse glasses as soon as possible after use and don't leave them soiled for long periods
- Use dishwasher racks designed for commercial use
- Stack glassware away from dinnerware and cutlery
- Ensure glasses don't come in contact with each other in glass racks



### Drink Preparation

- Make sure glasses are at room temperature before using them, unless they're for serving hot beverages, in which case gently heat them first
- Pour ice into glasses using plastic scoops
- Keep glasses clear of taps and dispensers
- Ensure glasses don't come in contact with each other in glass racks



### Service

- Make sure glassware is sparkling and without smudging before serving
- Never serve chipped or cracked glassware for safety reasons
- Avoid collecting more than one glass at a time to avoid glasses clashing with each other
- Hold glasses by the stem whether polishing or pouring



### Storing

- Always store glassware in plastic, compartmentalised racks
- Make sure glasses don't touch at either the base or rim
- Don't stack glasses on top of each other unless they're in racks designed to do so
- Don't store glasses until they've cooled

**Take advantage of our wash racking guide in the Storage, Cleaning & Janitorial section**, which helps you to determine the compartment size and extender needs of your glassware. For more tips and tools to elevate your back-of-house performance, visit [tomkin.com.au](http://tomkin.com.au) or chat to your distributor.